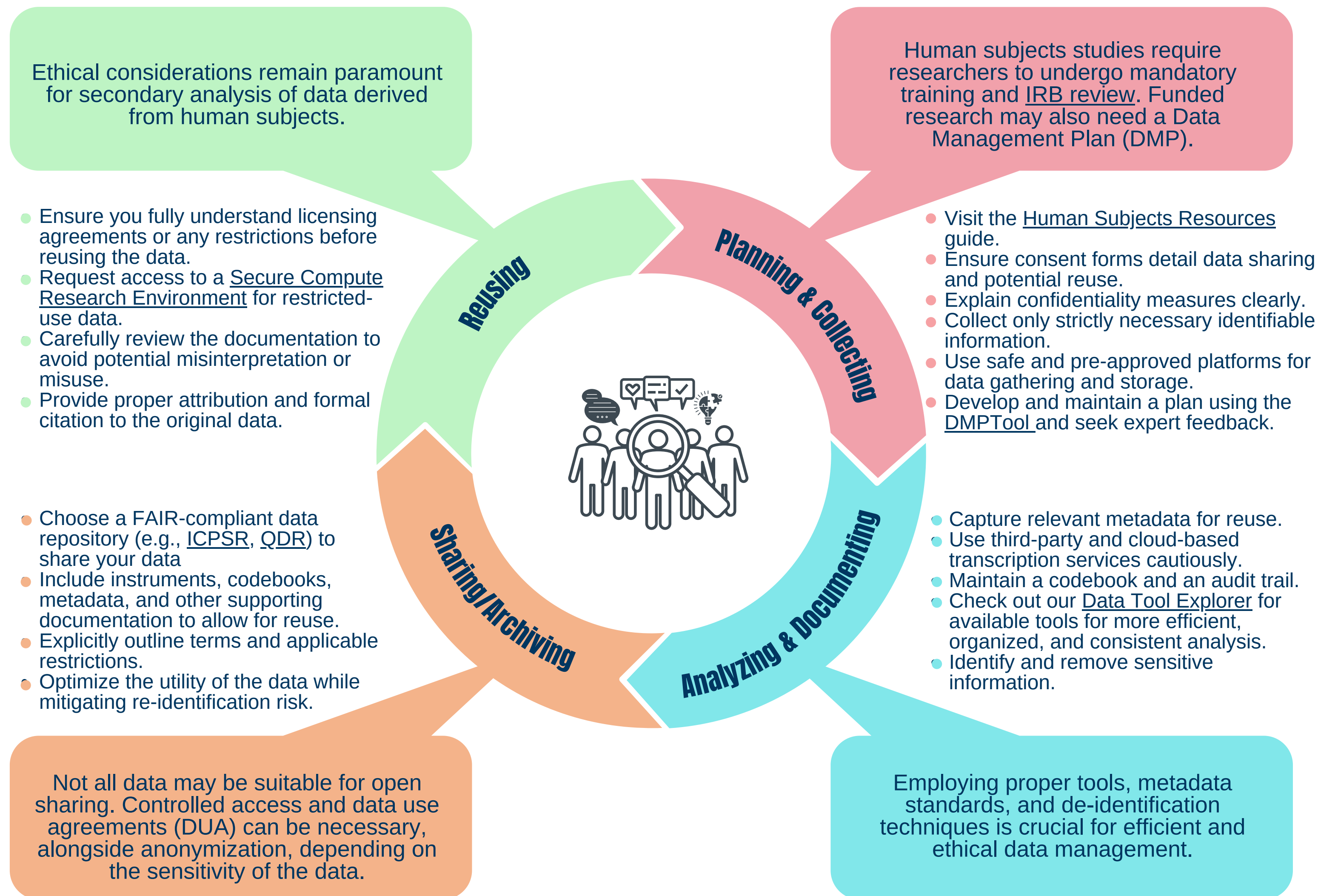


The Intricacies of Managing Qualitative Data from Human Subject Research

Qualitative data is inherently nuanced and deeply contextual. While it offers rich interpretive possibilities, its analysis and presentation often demand considerable resources. Moreover, due to its sensitivity, managing qualitative research data obtained from human subjects—such as interviews and observations—poses distinct ethical challenges. This handout delineates key considerations, practical tips, and available resources for effectively handling this data type across its lifecycle.



Our team can help you navigate all the stages within this lifecycle. Schedule a consultation with us: rds@library.ucsb.edu